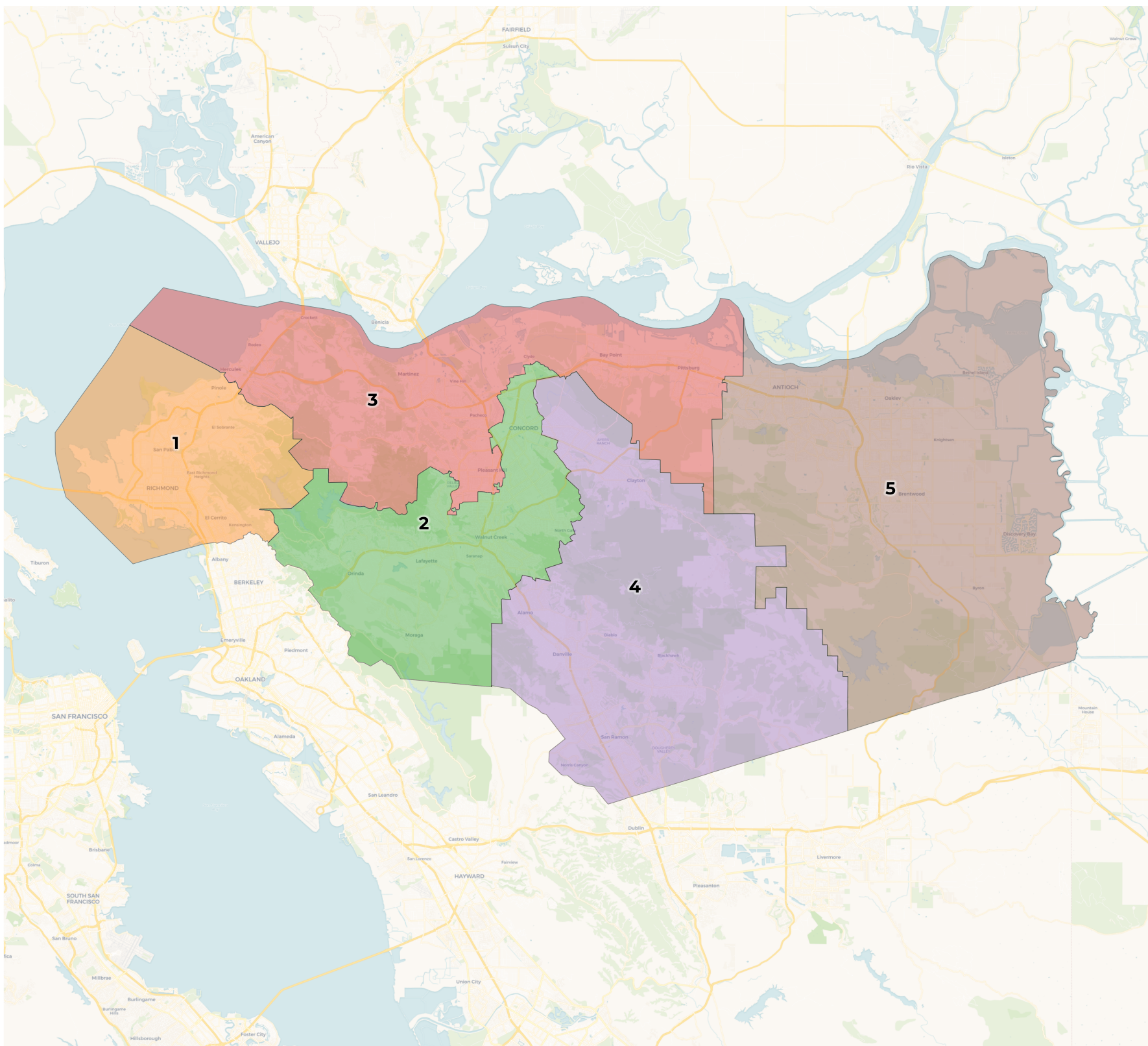


REDISTRICTING PARTNERS

Contra Costa COE Plan D3 (Adopted)

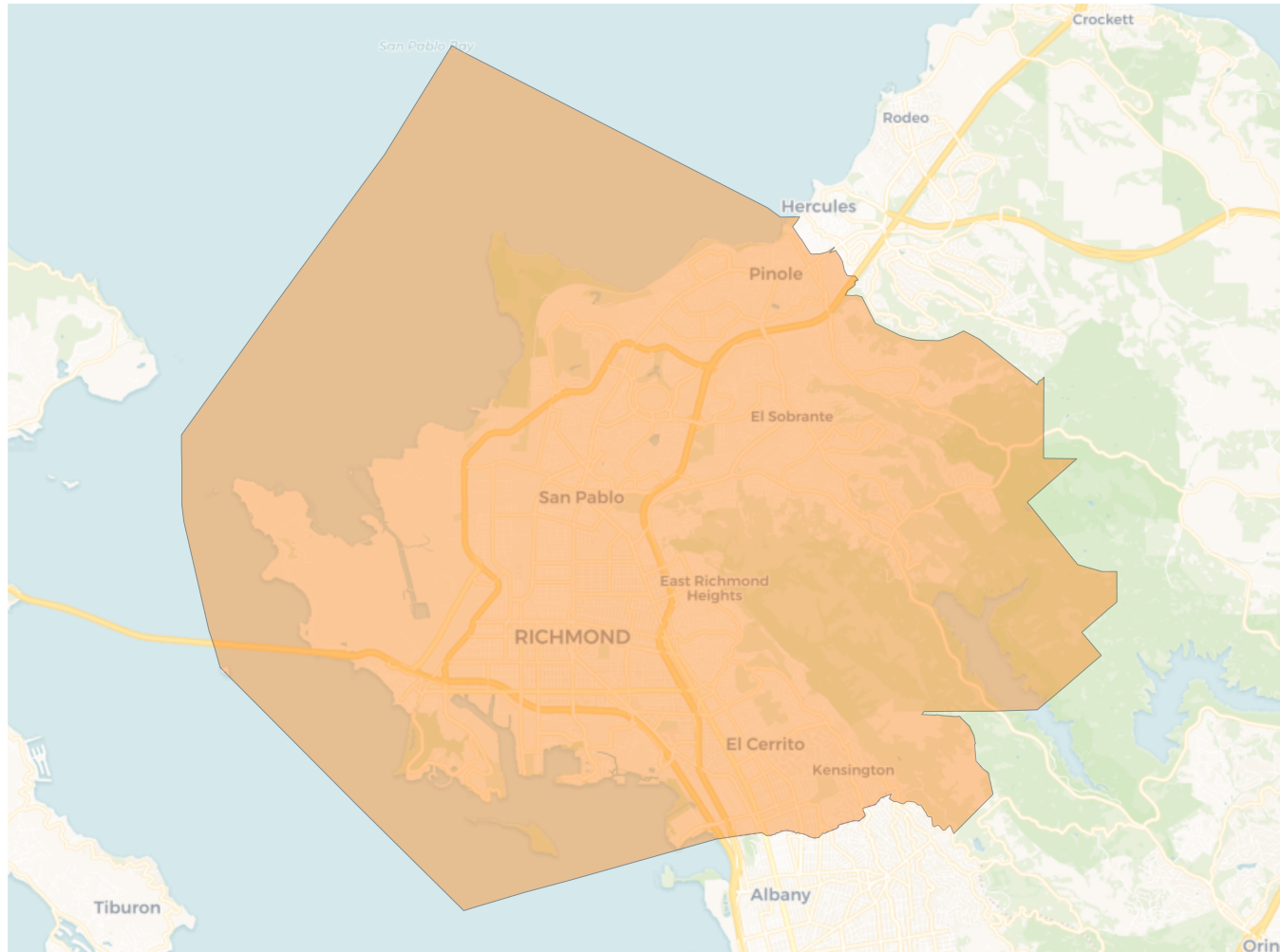
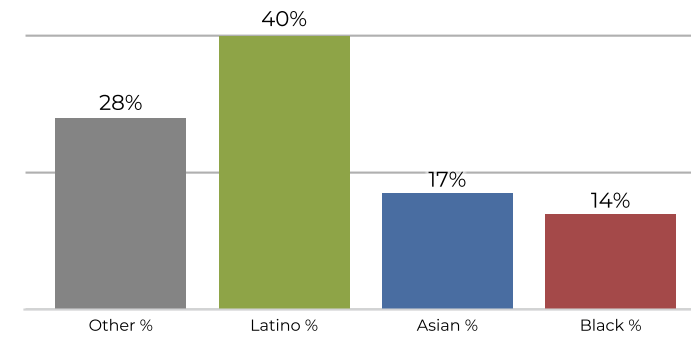
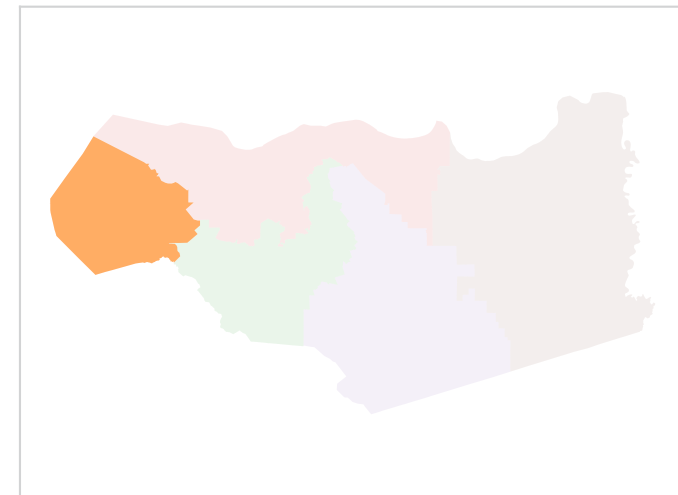
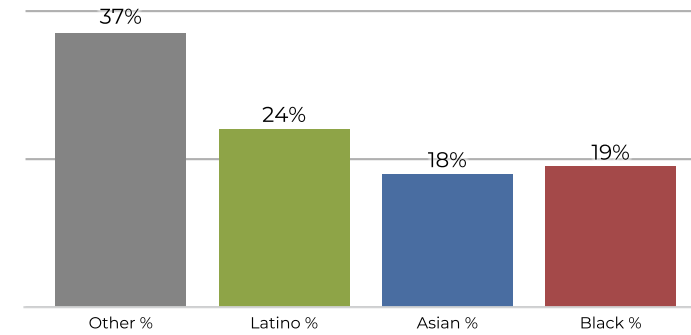


2020 Census

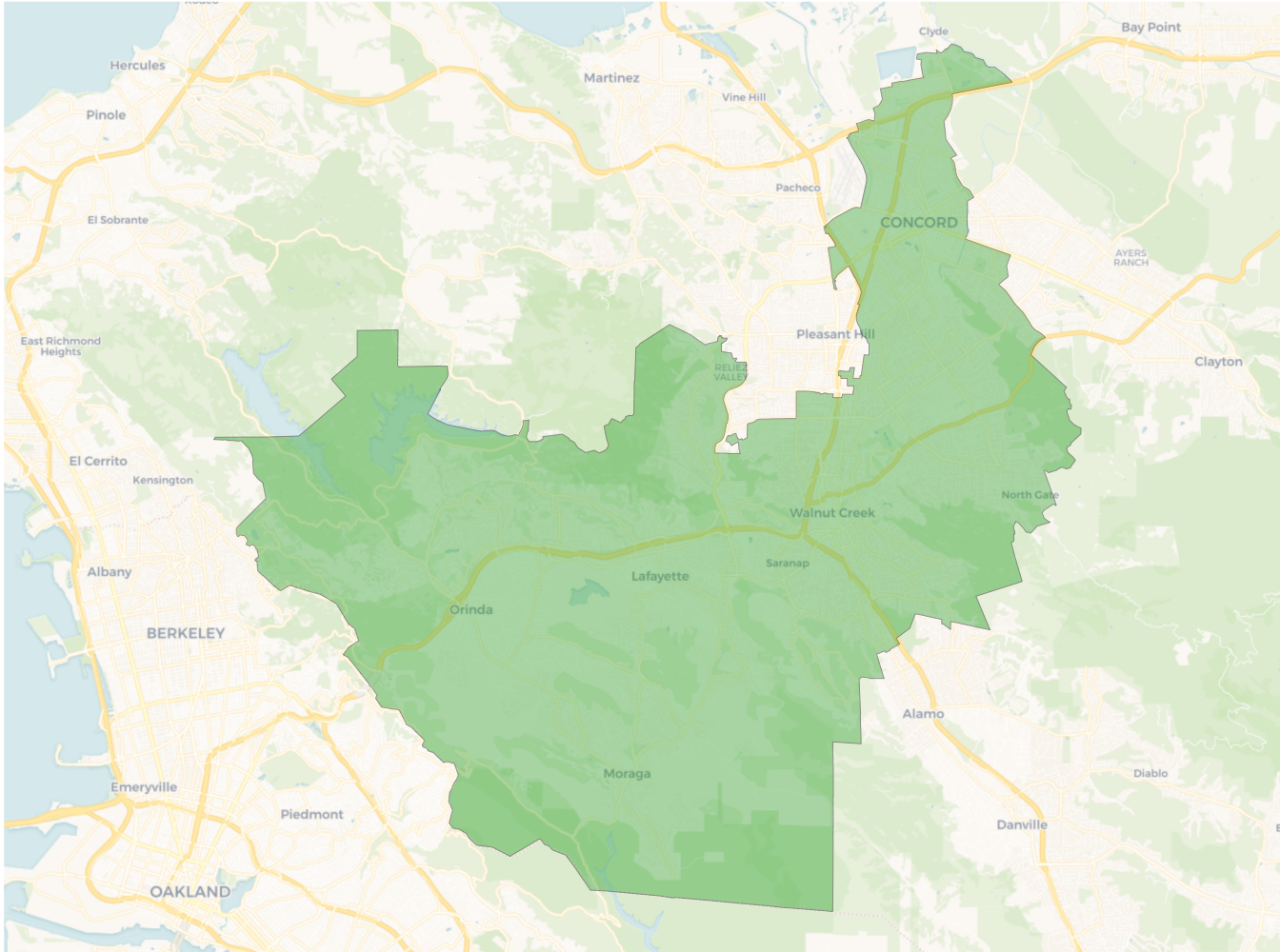
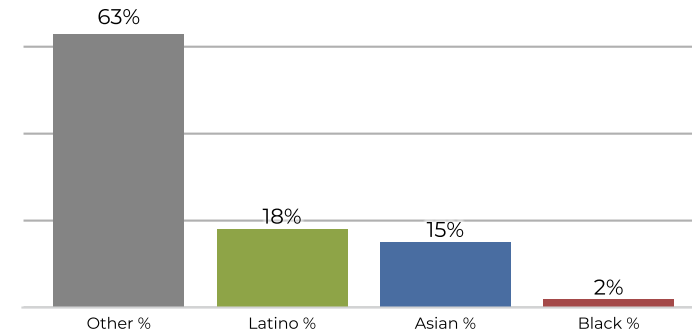
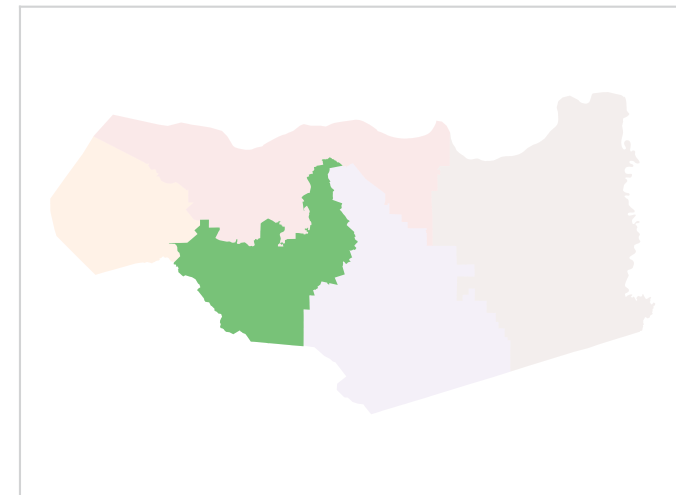
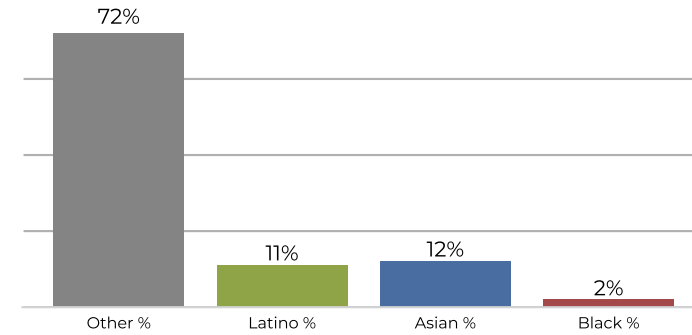
	1	2	3	4	5
Population	236,010	228,587	226,779	228,633	248,060
Deviation	2,396	-5,027	-6,835	-4,981	14,446
Deviation %	1.0%	-2.2%	-2.9%	-2.1%	6.2%
Other	66,940	145,236	91,322	129,145	106,454
Other %	28.4%	63.5%	40.3%	56.5%	42.9%
Latino	95,003	42,724	70,471	26,003	81,224
Latino %	40.3%	18.7%	31.1%	11.4%	32.7%
Asian	40,760	35,065	42,085	68,562	28,076
Asian %	17.3%	15.3%	18.6%	30.0%	11.3%
Black	33,307	5,562	22,901	4,923	32,306
Black %	14.1%	2.4%	10.1%	2.2%	13.0%

Citizen Voting Age Population (CVAP)

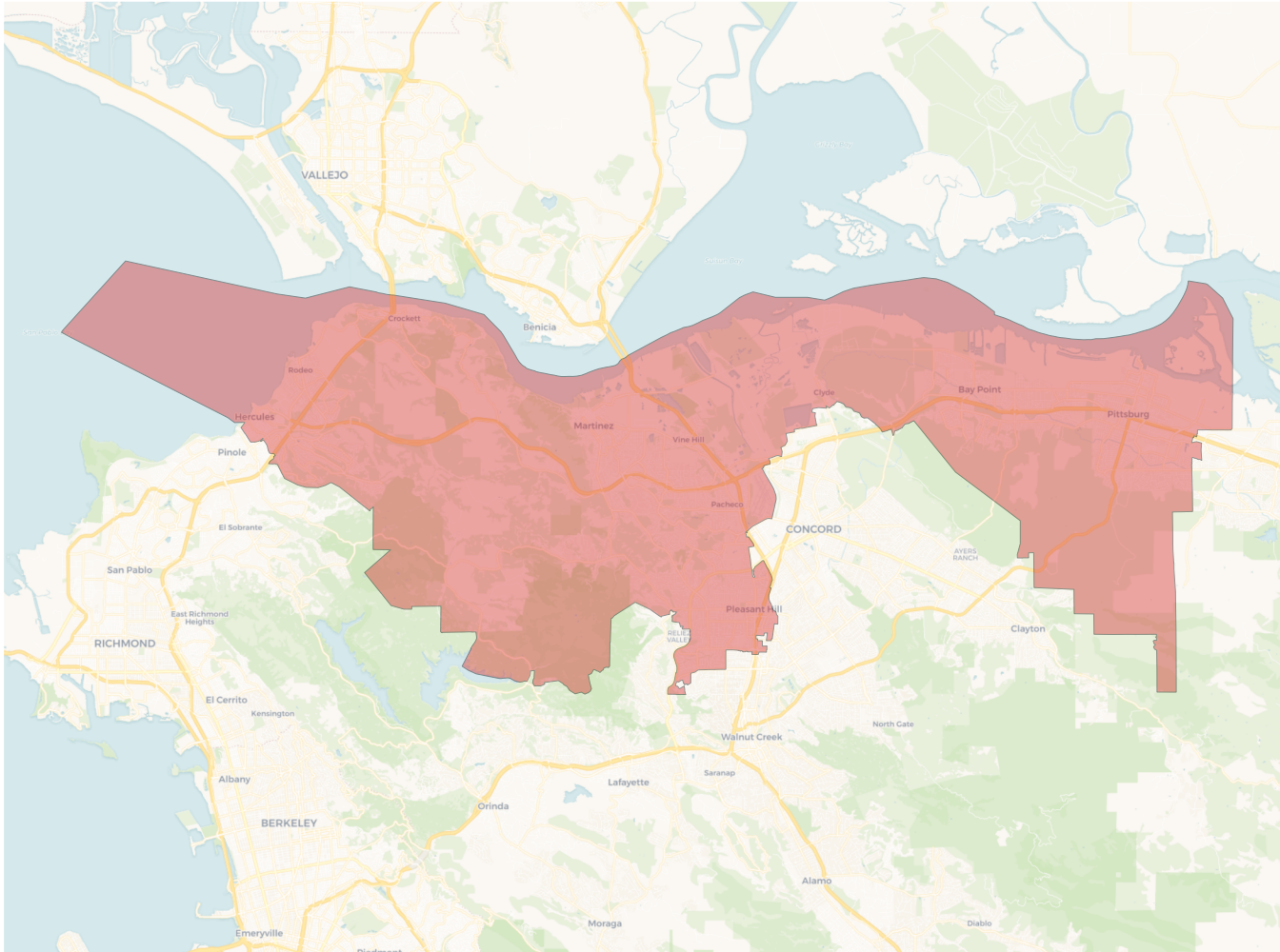
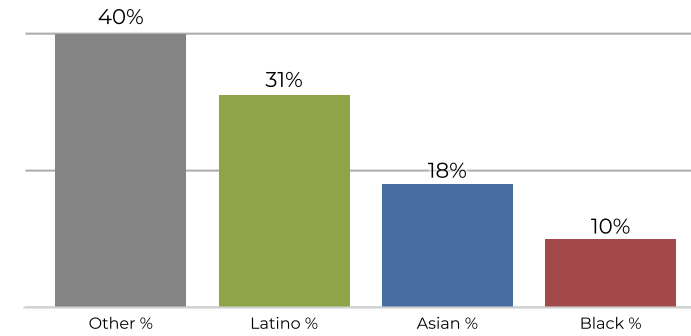
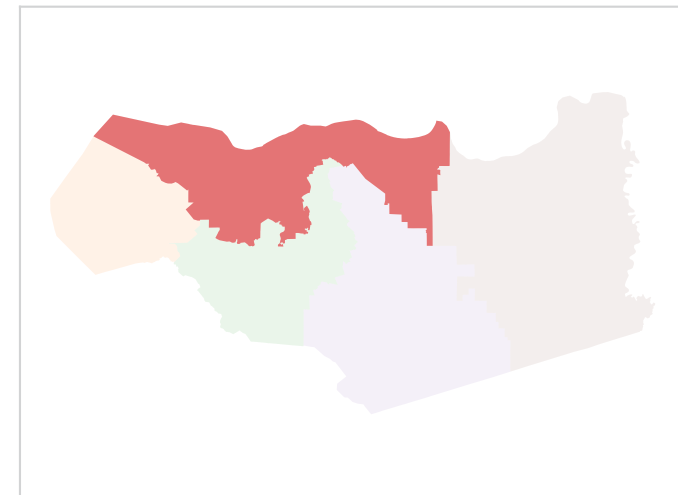
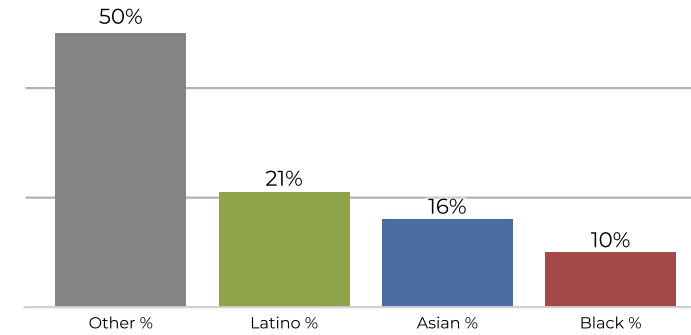
	1	2	3	4	5
Total CVAP	140,908	161,297	150,061	148,709	161,969
Other CVAP	52,449	117,583	75,947	103,603	86,363
Other CVAP %	37.2%	72.9%	50.6%	69.7%	53.3%
Latino CVAP	35,138	18,987	32,854	13,100	37,637
Latino CVAP %	24.9%	11.8%	21.9%	8.8%	23.2%
Asian CVAP	26,038	20,560	25,004	28,840	15,157
Asian CVAP %	18.5%	12.7%	16.7%	19.4%	9.4%
Black CVAP	27,283	4,167	16,256	3,166	22,812
Black CVAP %	19.4%	2.6%	10.8%	2.1%	14.1%

District 1

2020 Census

Citizen Voting Age Population


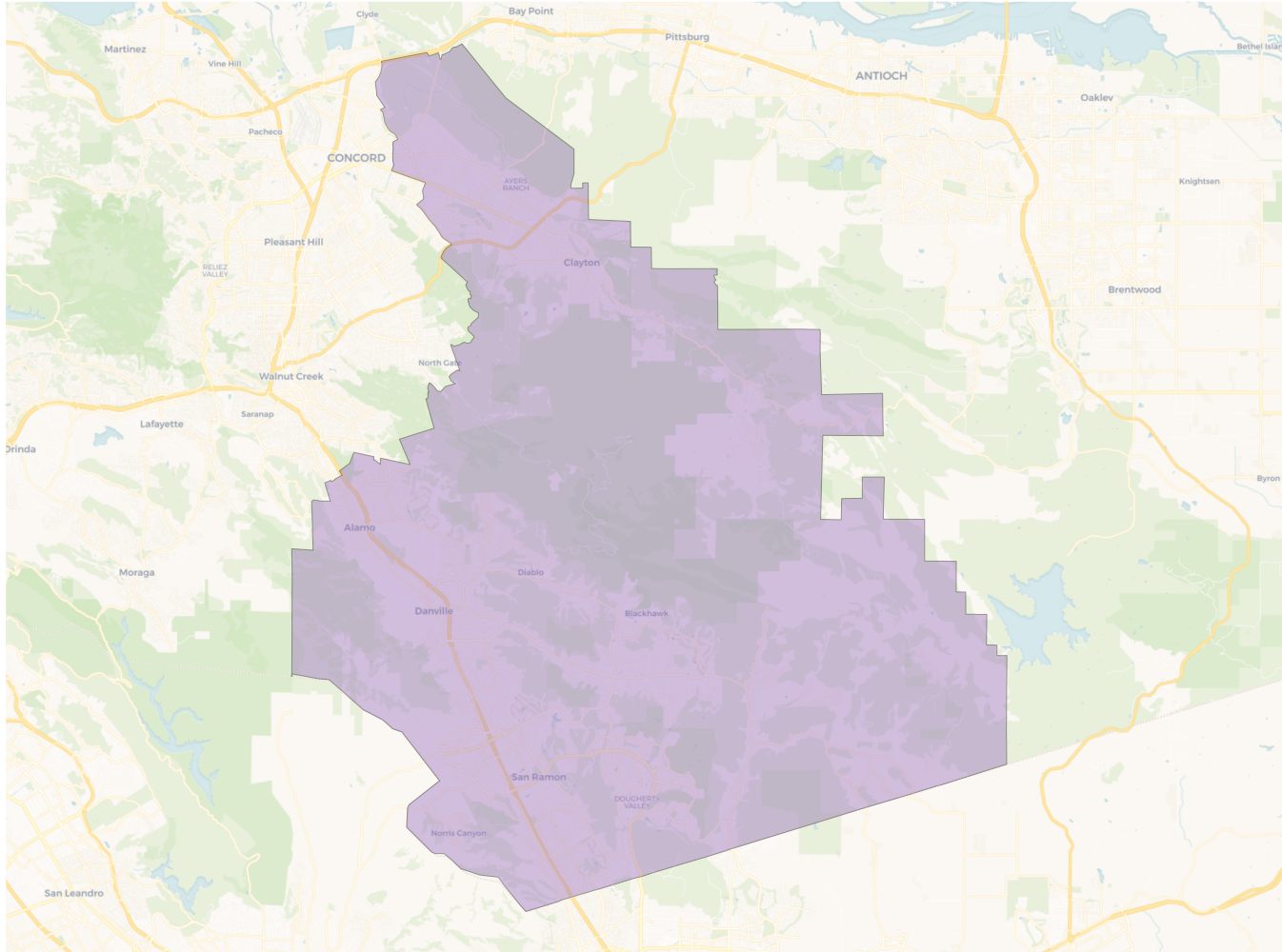
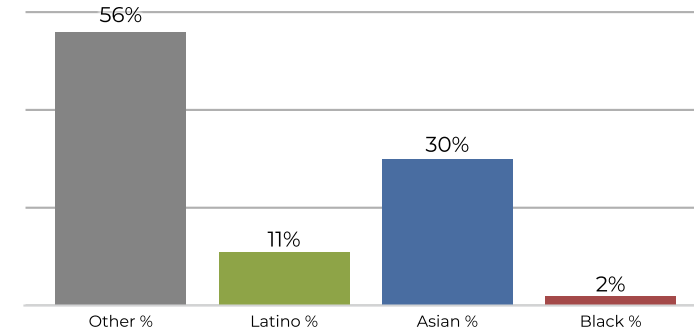
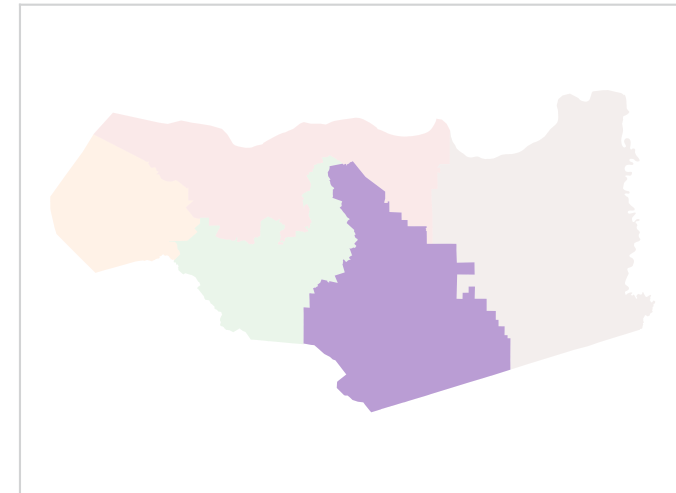
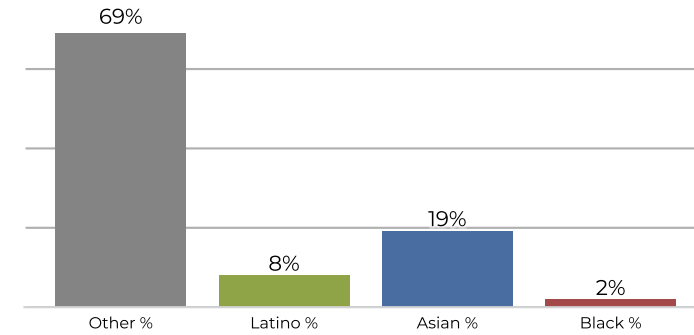
Population	Deviation	Deviation %	Other	Other %	Latino	Latino %	Asian	Asian %	Black	Black %
236,010	2,396	1.0%	66,940	28.4%	95,003	40.3%	40,760	17.3%	33,307	14.1%
Total CVAP	Other CVAP	Other CVAP %	Latino CVAP	Latino CVAP %	Asian CVAP	Asian CVAP %	Black CVAP	Black CVAP %		
140,908	52,449	37.2%	35,138	24.9%	26,038	18.5%	27,283	19.4%		

District 2

2020 Census

Citizen Voting Age Population


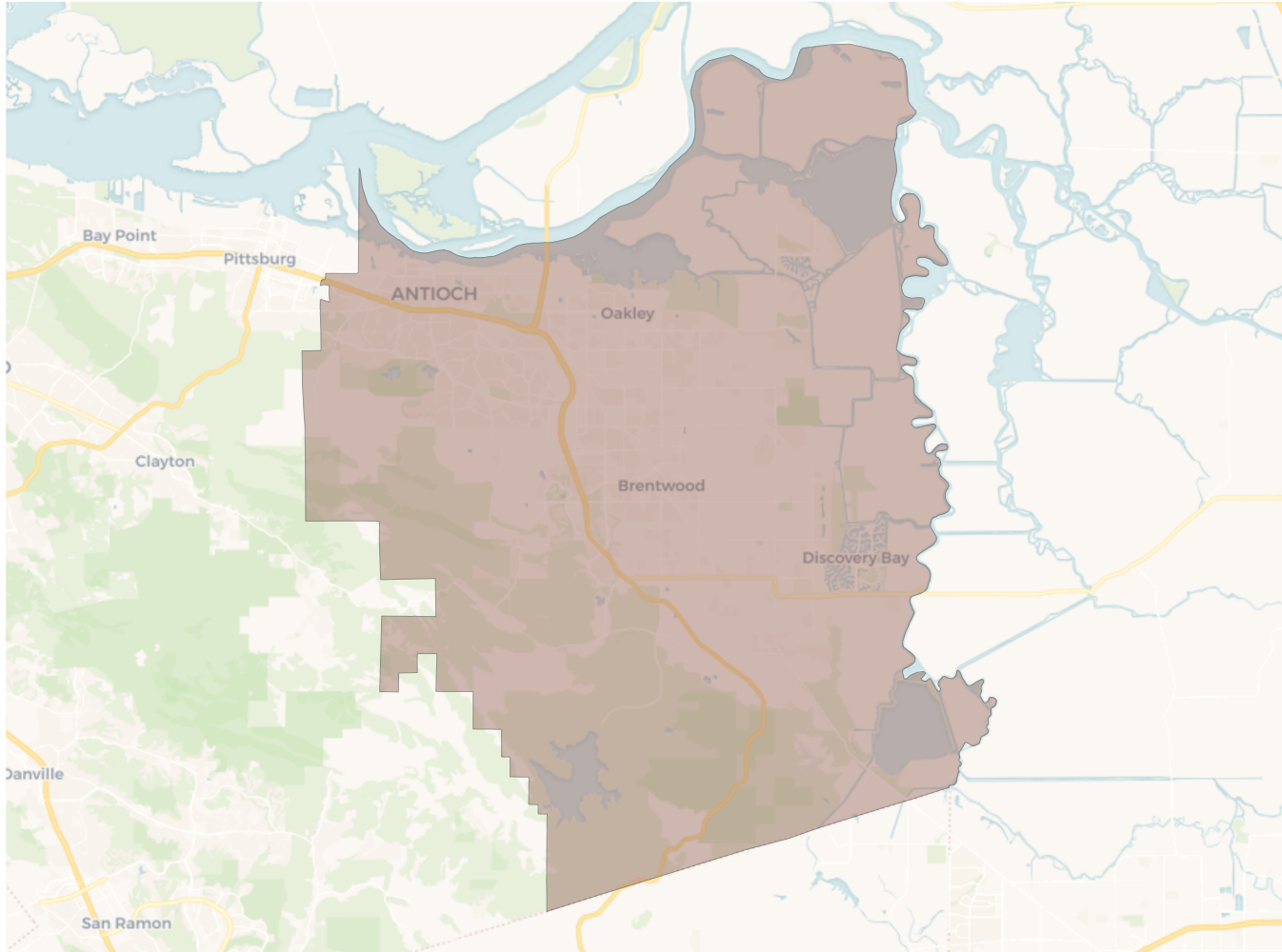
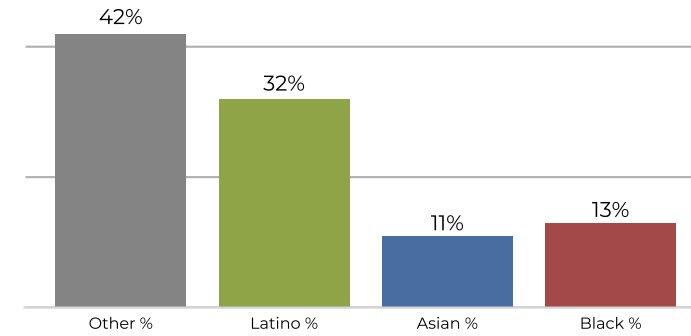
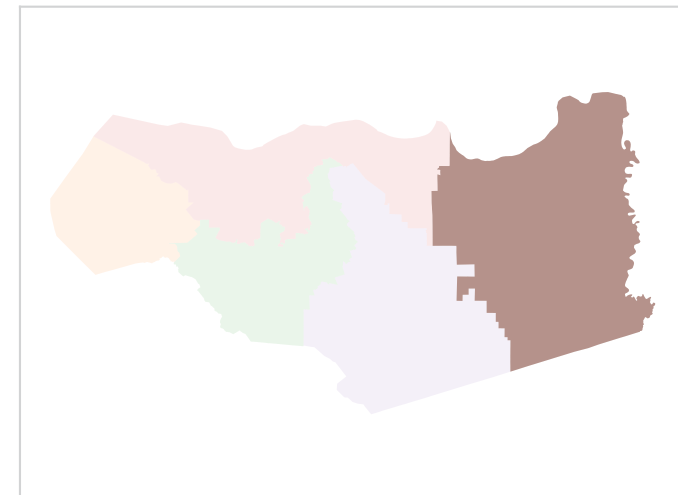
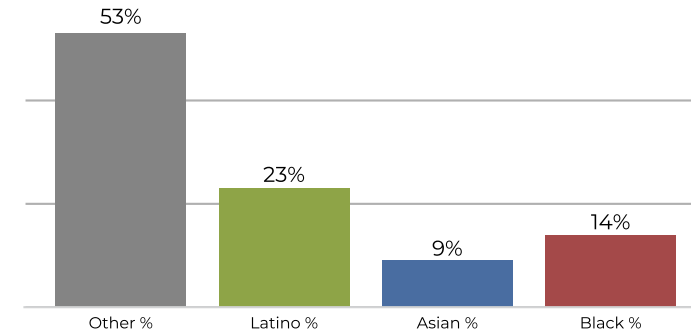
Population	Deviation	Deviation %	Other	Other %	Latino	Latino %	Asian	Asian %	Black	Black %
228,587	-5,027	-2.2%	145,236	63.5%	42,724	18.7%	35,065	15.3%	5,562	2.4%
Total CVAP	Other CVAP	Other CVAP %	Latino CVAP	Latino CVAP %	Asian CVAP	Asian CVAP %	Black CVAP	Black CVAP %		
161,297	117,583	72.9%	18,987	11.8%	20,560	12.7%	4,167	2.6%		

District 3

2020 Census

Citizen Voting Age Population


Population	Deviation	Deviation %	Other	Other %	Latino	Latino %	Asian	Asian %	Black	Black %
226,779	-6,835	-2.9%	91,322	40.3%	70,471	31.1%	42,085	18.6%	22,901	10.1%
Total CVAP	Other CVAP	Other CVAP %	Latino CVAP	Latino CVAP %	Asian CVAP	Asian CVAP %	Black CVAP	Black CVAP %		
150,061	75,947	50.6%	32,854	21.9%	25,004	16.7%	16,256	10.8%		

District 4

2020 Census

Citizen Voting Age Population


Population	Deviation	Deviation %	Other	Other %	Latino	Latino %	Asian	Asian %	Black	Black %
228,633	-4,981	-2.1%	129,145	56.5%	26,003	11.4%	68,562	30.0%	4,923	2.2%
Total CVAP	Other CVAP	Other CVAP %	Latino CVAP	Latino CVAP %	Asian CVAP	Asian CVAP %	Black CVAP	Black CVAP %		
148,709	103,603	69.7%	13,100	8.8%	28,840	19.4%	3,166	2.1%		

District 5

2020 Census

Citizen Voting Age Population


Population	Deviation	Deviation %	Other	Other %	Latino	Latino %	Asian	Asian %	Black	Black %
248,060	14,446	6.2%	106,454	42.9%	81,224	32.7%	28,076	11.3%	32,306	13.0%
Total CVAP	Other CVAP	Other CVAP %	Latino CVAP	Latino CVAP %	Asian CVAP	Asian CVAP %	Black CVAP	Black CVAP %		
161,969	86,363	53.3%	37,637	23.2%	15,157	9.4%	22,812	14.1%		